

BASE4

BASE4
3858 GLADES ROAD, #37
BOCA RATON, FLORIDA 33434
1.720.12BASE4 www.base-4.com

SEAL



GARRY VERMAAS, PhD, PE
2016.08.05
9011 EDGEWATER BEND
PARKLAND, FLORIDA, 33076



ISSUE:

Issued for Permit
08.05.2016

PROJECT: 16-018

Hampton Inn & Suites

New Stanton, PA 15672

OWNER:

Stanton Hospitality LLC

52 Blueberry Lane,
Grove City, PA 16127

No.	Issue Date	Project Status

DATE 2016.08.05

DRAWN BY SJ

CHECKED BY GWV

SCALE AS NOTED

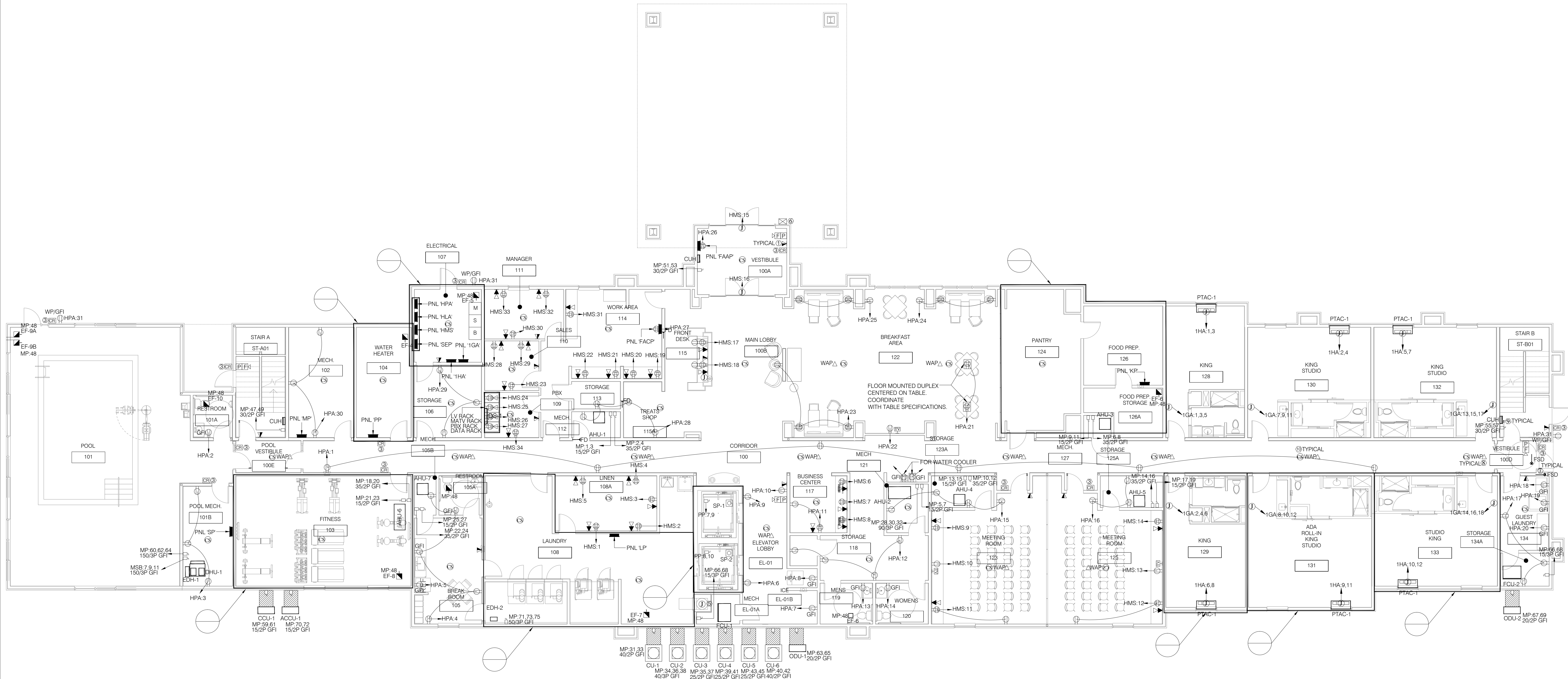
PROJECT NO. B4-67-1603

SHEET NAME

FIRST FLOOR
POWER PLAN

SHEET NO.

E201



GENERAL ELECTRICAL NOTES

1. ELECTRICAL CONTRACTOR SHALL PROVIDE ELECTRICAL ROUTE INCLUDING FEEDER HOME RUN TO METER CENTER.
2. COPPER CONDUCTOR SHALL BE USED FOR SERVICE AS WELL AS BRANCH FEEDER.
3. ELECTRICAL CONTRACTOR SHALL BALANCE CURRENT IN ALL PANELS; MODIFY AND/OR ADJUST CIRCUITS AS REQUIRED.
4. POOL ROOM ELECTRICAL CONTRACTOR TO PROVIDE BONDING OF ANY METAL WITHIN 5 FEET OF WATER EDGE INCLUDING WINDOW FRAMES.
5. SMOKE AND DATA CABLING INSTALLED IN 'SMURF' TUBE.
6. WIRELESS INTERNET SHALL BE PROVIDED BY LOW VOLTAGE VENDOR AND SELECTED BY OWNER. APPROVED EQUALS MUST BE APPROVED BY EOR AND FRANCHISE.

FIRE ALARM NOTES

1. SEE INDIVIDUAL ENLARGED SUITE PLANS FOR LOCATIONS OF SMOKE DETECTORS AND STROBES IN EACH GUEST ROOM.
2. SMOKE DETECTORS SHALL BE BRK SC91208 COMBINATION SMOKE AND CO DETECTORS.
3. SHUNT TRIP BREAKER FOR ELEVATOR CONTROLLER SHALL BE ACTIVATED BY HEAT DETECTOR IN ELEVATOR EQUIPMENT ROOM.
4. THE CONTRACTOR SHALL PREPARE SHOP DRAWINGS OF THE PROPOSED FIRE ALARM SYSTEM, INCLUDING ALL DEVICES AND WIRING LAYOUTS TO THE FIRE MARSHALL FOR APPROVAL PRIOR TO PURCHASING OR INSTALLING ANY ROUGH-IN BEFORE SUBMITTING TO THE ENGINEER FOR REVIEW. THE ENGINEER WILL PROVIDE CAD DRAWING OF FLOOR PLANS FOR SHOP DRAWING PREPARATION ON REQUEST. ANY REVISIONS OR ALTERATIONS TO THE SYSTEM REQUIRED BY THE LOCAL JURISDICTION PRIOR TO OBTAINING CERTIFICATE OF OCCUPANCY OBTAINING CERTIFICATE OF OCCUPANCY WILL NOT BE REASON FOR ADDITIONAL COMPENSATION TO THE CONTRACTOR.
5. DETECTION DEVICES ARE EQUIPPED THROUGHOUT GUEST ROOM CORRIDORS. AT SPACING NOT TO EXCEED 40 FEET ON CENTER. PUBLIC AREAS, SERVICE AREAS, (WHERE APPLICABLE) AND MECHANICAL AREAS. DETECTORS ARE REQUIRED FOR ALL STORAGE ROOMS MORE THAN 150 SQUARE FEET. MANUAL PULL STATIONS ARE REQUIRED ADJACENT TO ALL EXIT DOORS THAT LEAD DIRECTLY TO AN EXTERIOR AND AT ALL STAIRWELL ENTRANCE DOORS.
6. SMOKE DETECTORS IN ELEVATOR LOBBYS TO SIGNAL ELEVATOR TO RECALL TO FIRST FLOOR.

KEY NOTES

- ① HOUSE PHONE ONLY W/ AUTOMATIC DIAL TO FRONT DESK.
- ② PROVIDE 3/4" C. WITH INTERCOM WIRING TO BUZZER AT FRONT DESK.
- ③ CARD READERS INSTALLED PER MANUFACTURERS INSTRUCTIONS. PROVIDE ELECTRICAL CONNECTION TO CARD READERS SEE HPA.50. TYPICAL FOR ALL FLOOR.
- ④ COORDINATE WITH MECHANICAL DRAWING FOR ALL MECHANICAL EQUIPMENT.
- ⑤ J-BOX FOR LAUNDRY CHUTE DOOR INTERLOCK TO TIE TO CIRCUIT LP.25. TYPICAL FOR EACH FLOOR.
- ⑥ FIRE DEPARTMENT LOCK BOX. PROVIDE CONNECTION TO FIRE ALARM SYSTEM FOR MONITORING. CONTRACTOR SHALL COORDINATE EXACT LOCATION AND MOUNTING HEIGHT WITH LOCAL REQUIREMENTS.
- ⑦ FIRE/SMOKE DAMPER CONNECT TO FIRE ALARM SYSTEM. SEE MECHANICAL DWG FOR LOCATION AND REQUIREMENT. ELECTRICAL CONNECTION TO SMOKE/FIRE DAMPER CKT HPA.48.
- ⑧ CONTRACTOR SHALL ENSURE W-FI IS PROVIDED THROUGHOUT PUBLIC AREA.
- ⑨ MAGNETIC DOOR-HOLD TIED TO THE BUILDING FIRE ALARM CONTROL PANEL. PROVIDE ELECTRICAL CONNECTION TO MAGNETIC DOOR-HOLD SEE CKT HPA.52. TYPICAL FOR ALL FLOOR.
- ⑩ CONTRACTOR SHALL USE (MODEL NO BRK SC91208) COMBINATION OF SMOKE AND CO DETECTORS. DETECTOR INSTALLED MINIMUM 3'-0" FROM HVAC SUPPLY AIR DIFFUSERS.

01

FIRST FLOOR POWER PLAN

SCALE: 1/16" = 1'-0"